

NZ & TAURANGA OWNED
SUPPORT LOCAL



TE MANAWA Ō PĀPĀMOA

Special Day Programme

To Book:

play-time.co.nz/before-after-school-care
Click TE MANAWA - click "Book Manawa Day"
(read T&C's before booking)
Click the FB icon to join our closed FB page.

Why choose an accredited OSCAR programme?: see why at play-time.co.nz/about

Need more information?
check out our Handbook and heaps more info at play-time.co.nz



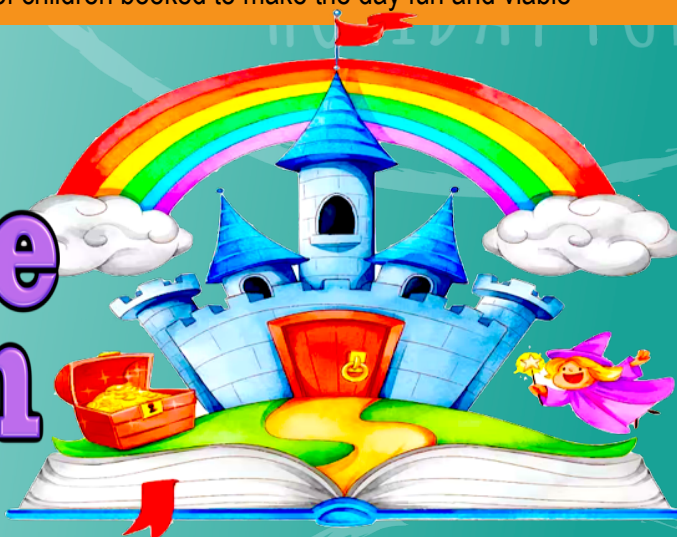
MONDAY 2 FEBRUARY

MANAWA KITE MANAWA

SCHOOL IS CLOSED – PLAY TIME IS OPEN*

*subject to minimum number of children booked to make the day fun and viable

Fairytale Kingdom



Enter the Fairytale Kingdom with us today! Create your own Crown or Wand, make a Dragon puppet! Play Dragon Egg Toss, make cardboard castles and heaps more!

Make

create

Discover

PLAY



Te Manawa Ō
Pāpāmoa
School

In the
School Hall

92 Te Okuroa
Drive
Pāpāmoa



2 Feb 2026

Cut-off time for
bookings is 4pm
the day before

The system will tell
you if the day is
fully booked



Children age 5-13
from all schools
welcome



Long Day
7.30am - 6pm \$60
Short Day
7.30am - 3pm \$52

late pickups for 3pm are changed to
Long Day & invoiced out accordingly due
to staffing adjustments required
Choose "Full Week Booking" to get
discounted rate (conditions apply).
Extra charges apply on some days
If an activity cannot go ahead due to
weather it will be replaced with an equal
priced alternative



Bring LARGE packed
morning tea & lunch.
Refillable water bottle.
Change of clothes (in case of
accidents)
Appropriate clothes, shoes.
Please name all belongings.
Please leave valuables/
special items at home.



Strictly by invoice Due Date (in
advance) to confirm the booking &
secure the space.

Holiday Programme cancellation/
switching days policy:

1 week notice - includes last minute
bookings. Cancellations/edits to be
made by the Account Holder in
Enrolmy - admin/staff do not edit
bookings.

WINZ OSCAR SUBSIDY?

WINZ OSCAR Subsidies may be
available to eligible families (up to
100% of fees) - More info at
play-time.co.nz/winzsbsidyinfo
If winz has confirmed subsidy,
then parent portion is due before
attending.

If winz has not processed subsidy,
the invoice is to be paid in full
before attending.

Get booking & forms in ASAP to
give winz time to process.

TMOP

020 4186 4899
this is not a general
information number

If your child is
booked with us,
join the closed FB
group for important
updates, lost
property, pics of
the day etc.

NZ & TAURANGA OWNED
SUPPORT LOCAL



TE MANAWA Ō PĀPĀMOA

Special Day Programme

To Book:

play-time.co.nz/before-after-school-care
Click TE MANAWA - click "Book Manawa Day"
(read T&C's before booking)
Click the FB icon to join our closed FB page.

Why choose an accredited OSCAR programme?: see why at play-time.co.nz/about

Need more information?
check out our Handbook
and heaps more info at
play-time.co.nz



TUESDAY 3 FEBRUARY

MANAWA KITE MANAWA

SCHOOL IS CLOSED – PLAY TIME IS OPEN*

*subject to minimum number of children booked to make the day fun and viable

Party like it's the 2000's

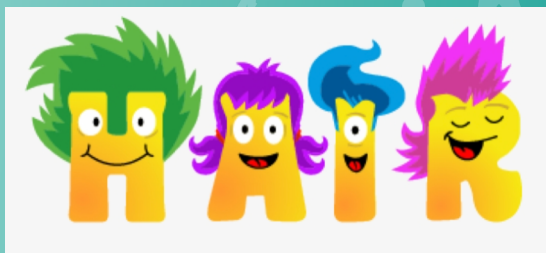


Party Like It's the 2000's with us today! Make Friendship Bracelets, Crazy Hair-Do's, plus a Tattoo parlour & a Neon Disco! Play Pass-the-Parcel, make Fairy Bread & heaps more!

Make



create



Discover

PLAY



Te Manawa Ō
Pāpāmoa
School

In the
School Hall

92 Te Okuroa
Drive
Pāpāmoa



3 Feb 2026

Cut-off time for
bookings is 4pm
the day before

The system will tell
you if the day is
fully booked



Children age 5-13
from all schools
welcome



Long Day
7.30am - 6pm \$60
Short Day
7.30am - 3pm \$52

late pickups for 3pm are charged to
Long Day & invoiced out accordingly due
to staffing adjustments required
Choose "Full Week Booking" to get
discounted rate (conditions apply).
Extra charges apply on some days
If an activity cannot go ahead due to
weather it will be replaced with an equal
priced alternative



Bring LARGE packed
morning tea & lunch.
Refillable water bottle.
Change of clothes (in case of
accidents)
Appropriate clothes, shoes.
Please name all belongings.
Please leave valuables/
special items at home.



Strictly by invoice Due Date (in
advance) to confirm the booking &
secure the space.
Holiday Programme cancellation/
switching days policy:
1 week notice - includes last minute
bookings. Cancellations/edits to be
made by the Account Holder in
Enrolmy - admin/staff do not edit
bookings.

WINZ OSCAR SUBSIDY?

WINZ OSCAR Subsidies may be
available to eligible families (up to
100% of fees) - More info at
play-time.co.nz/winzsubsidyinfo
If winz has confirmed subsidy,
then parent portion is due before
attending.
If winz has not processed subsidy,
the invoice is to be paid in full
before attending.
Get booking & forms in ASAP to
give winz time to process.

TMOP

020 4186 4899
this is not a general
information number

If your child is
booked with us,
join the closed FB
group for important
updates, lost
property, pics of
the day etc.